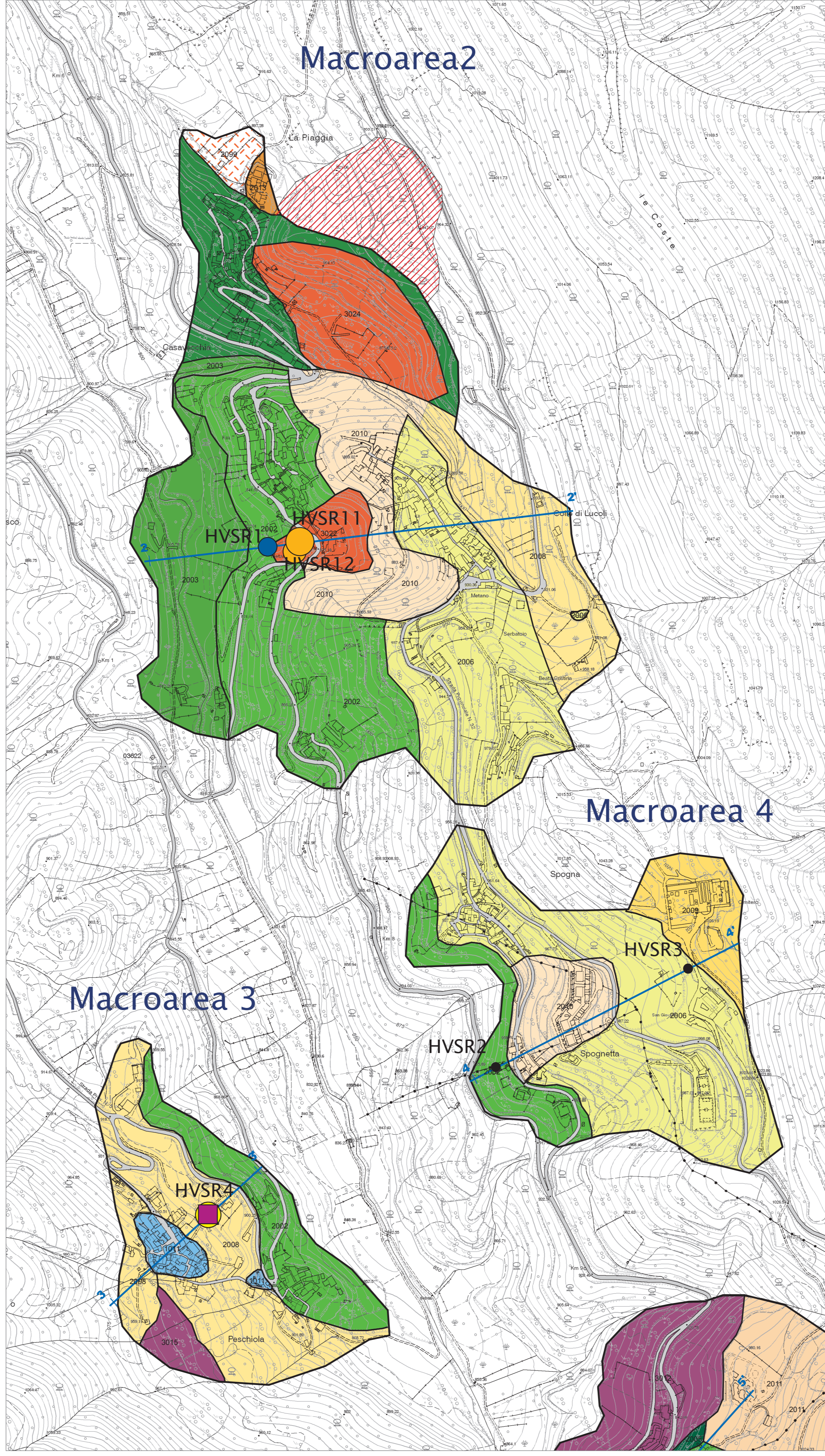
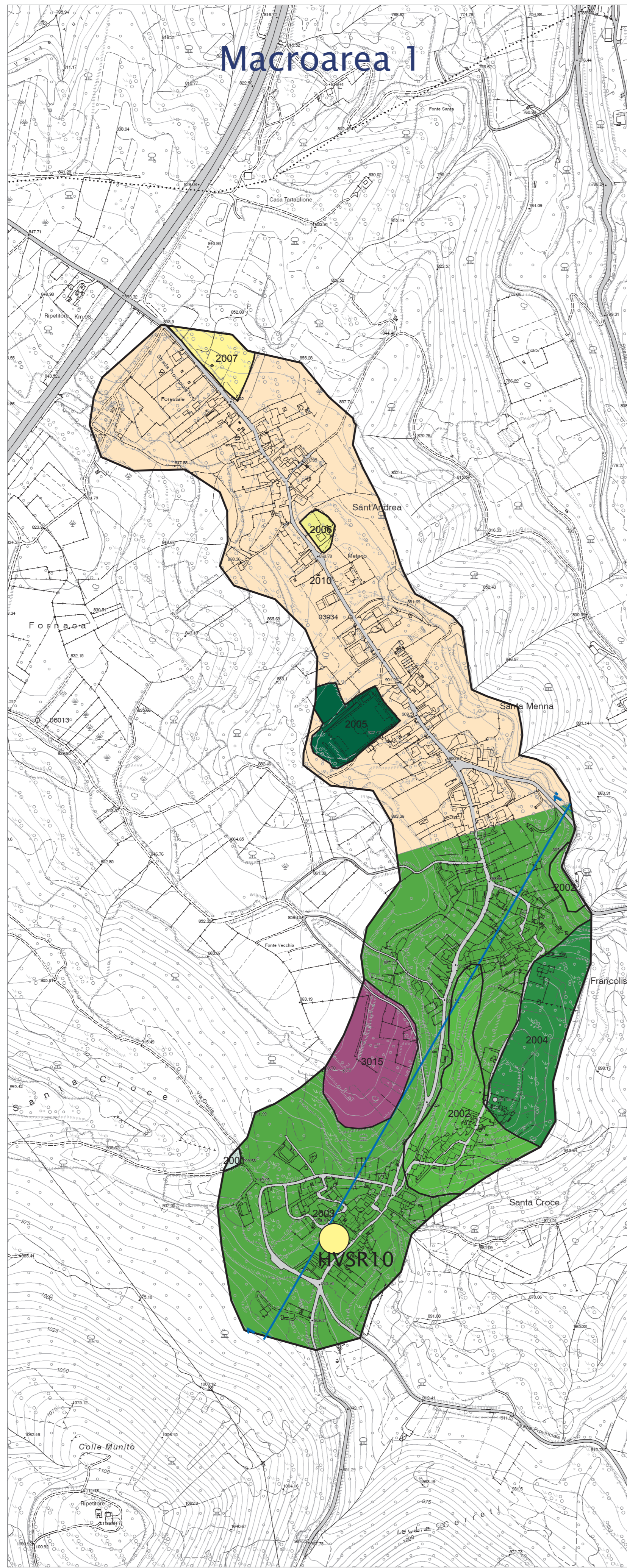
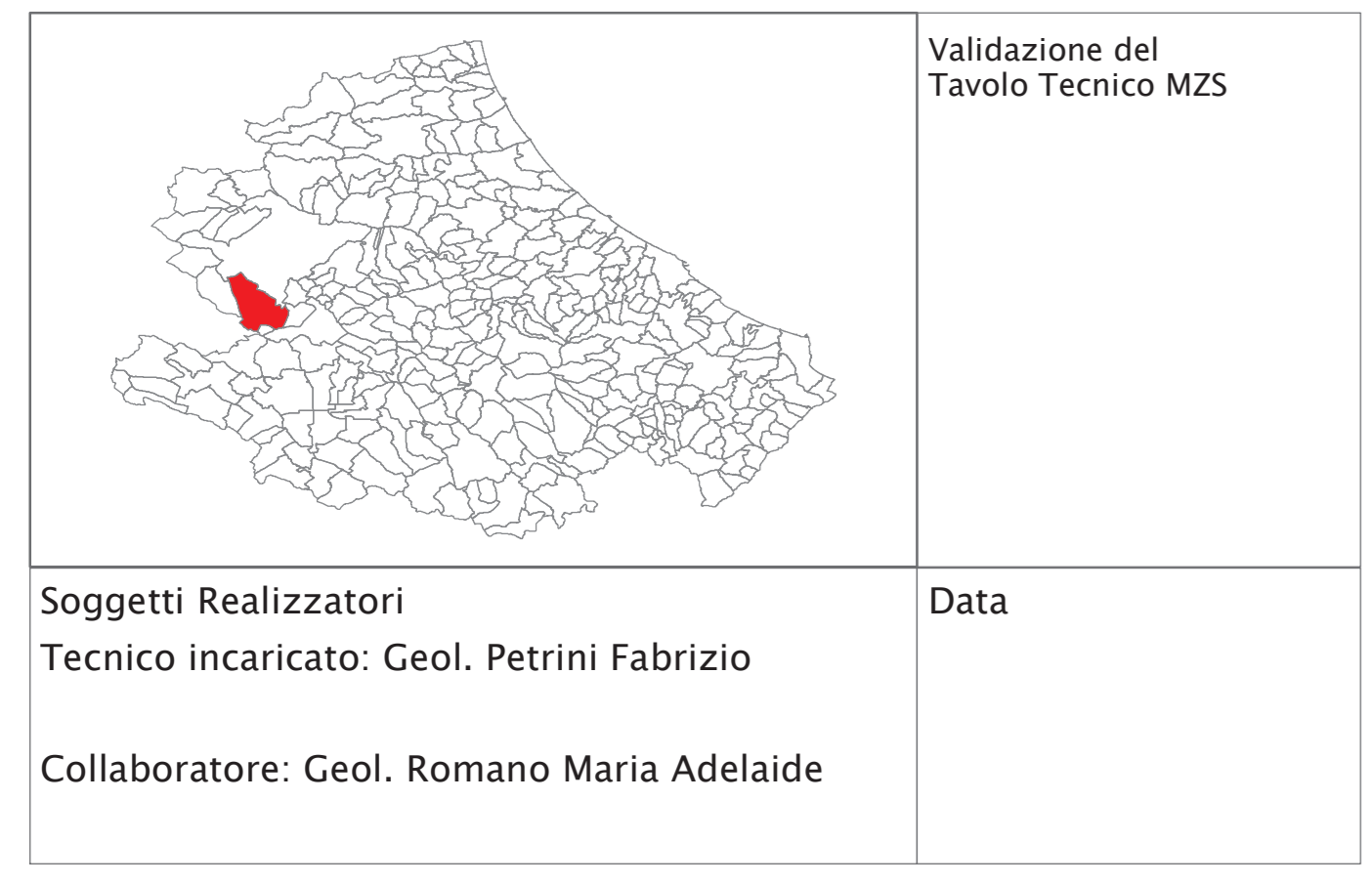


# MICROZONAZIONE SISMICA

Carta delle Microzone Omogenee in Prospettiva Sismica  
delle Frequenze Fondamentali di Vibrazione

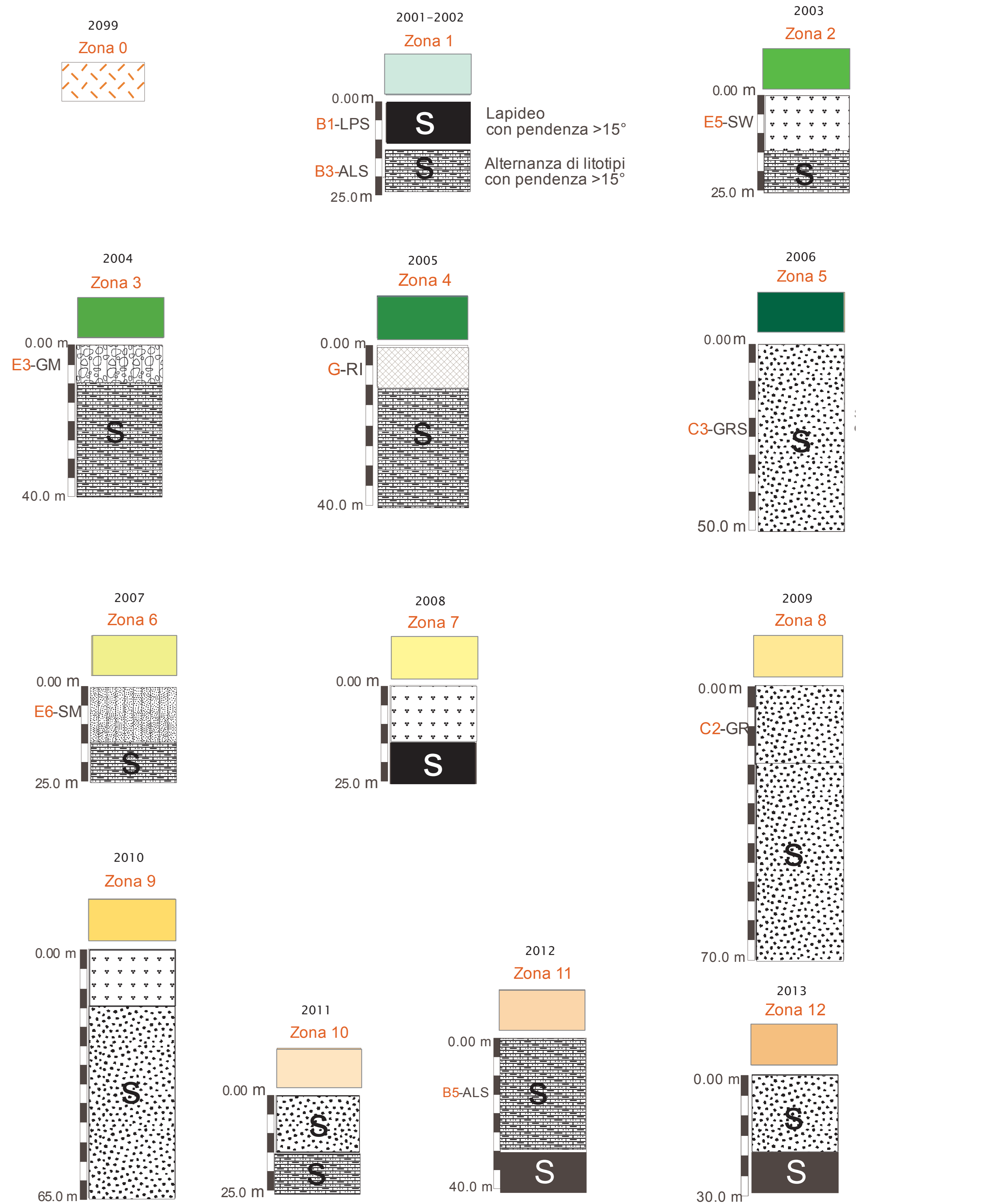
SCALA 1:5.000  
Base topografica: CTR 1:5.000 fornita dal Servizio Cartografico della Regione Abruzzo - Sistema di Riferimento Geografico WGS 1984 Fuso 33N

REGIONE ABRUZZO  
Comune di  
Lucoli (AQ) – Macroaree 1 – 2 – 3 – 4

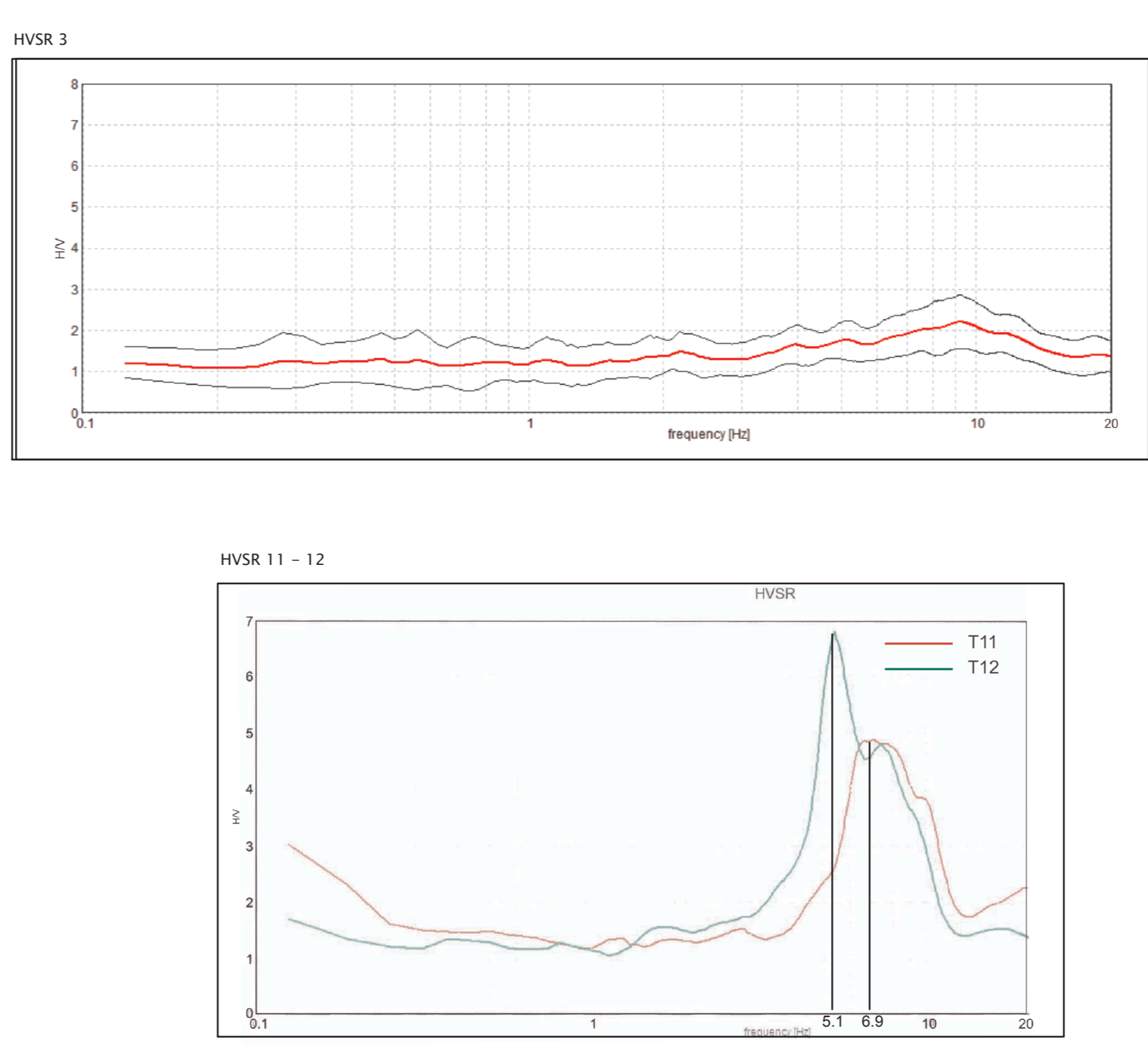
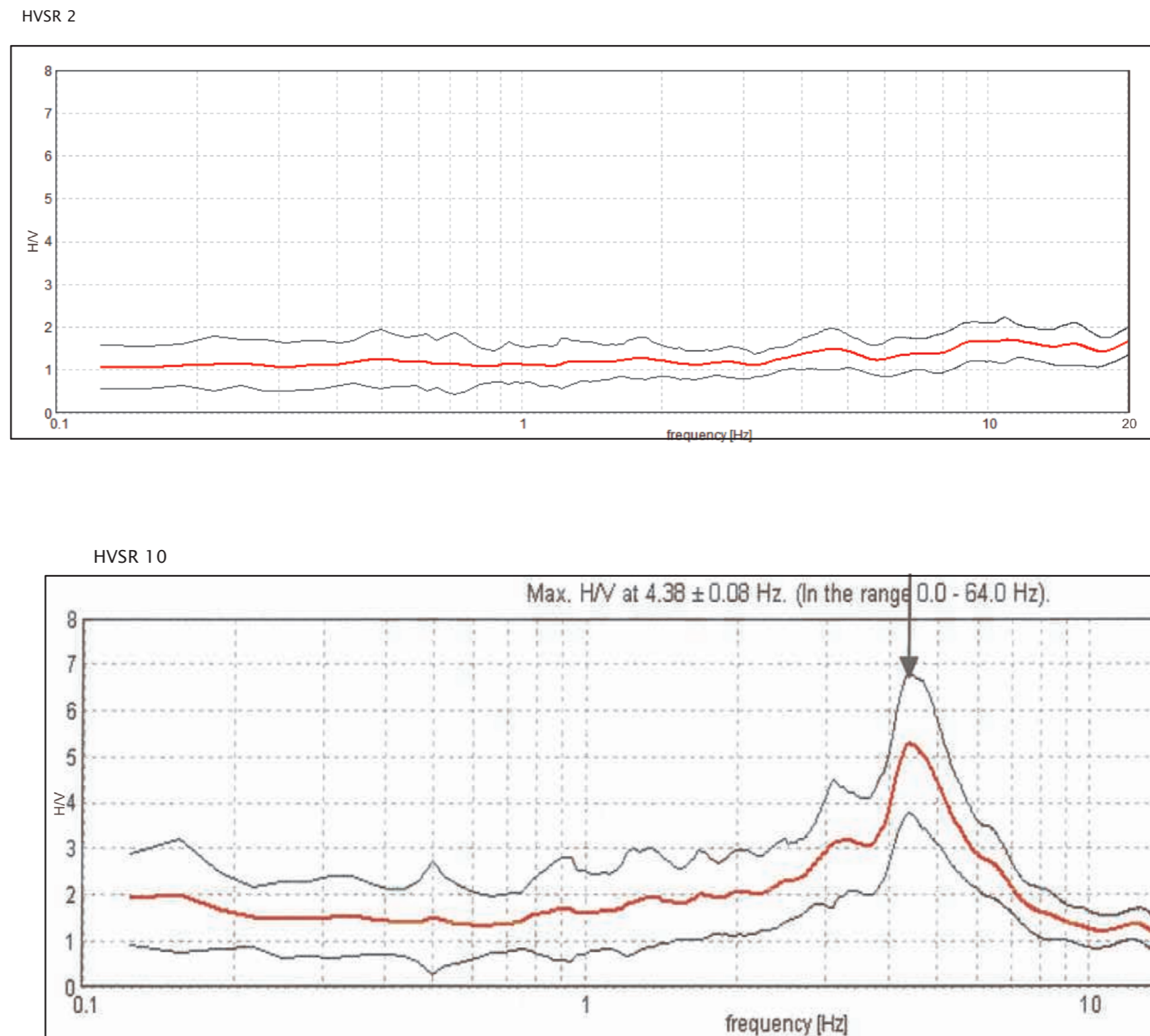
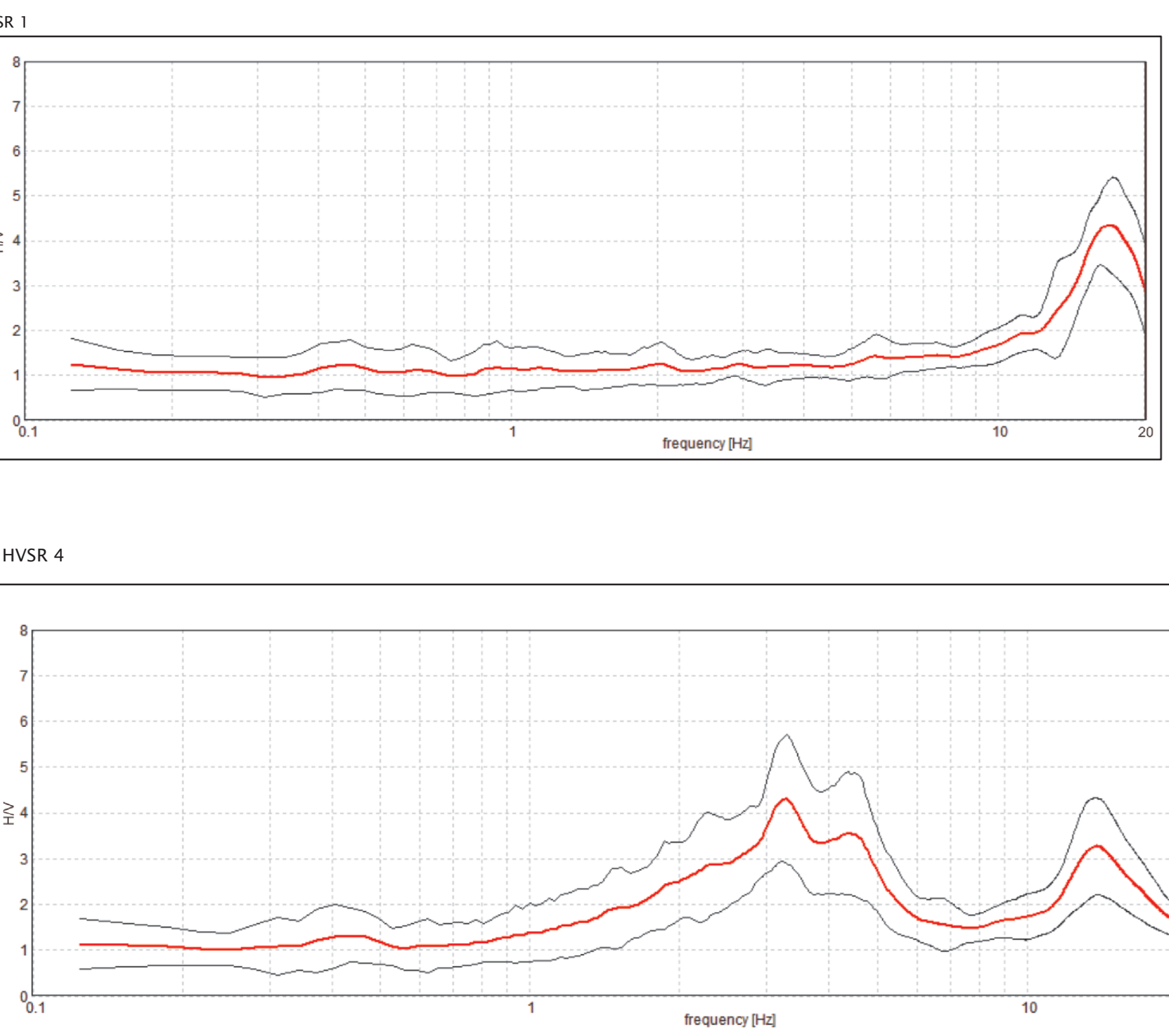


## Legenda

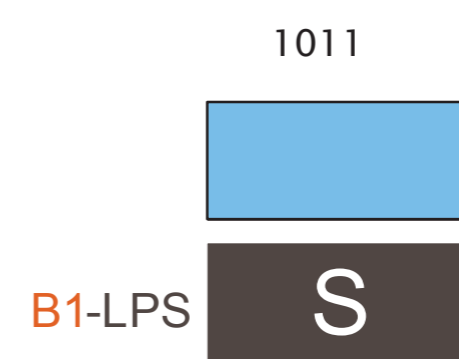
## ZONE STABILI SUSCETTIBILI DI AMPLIFICAZIONI LOCALI



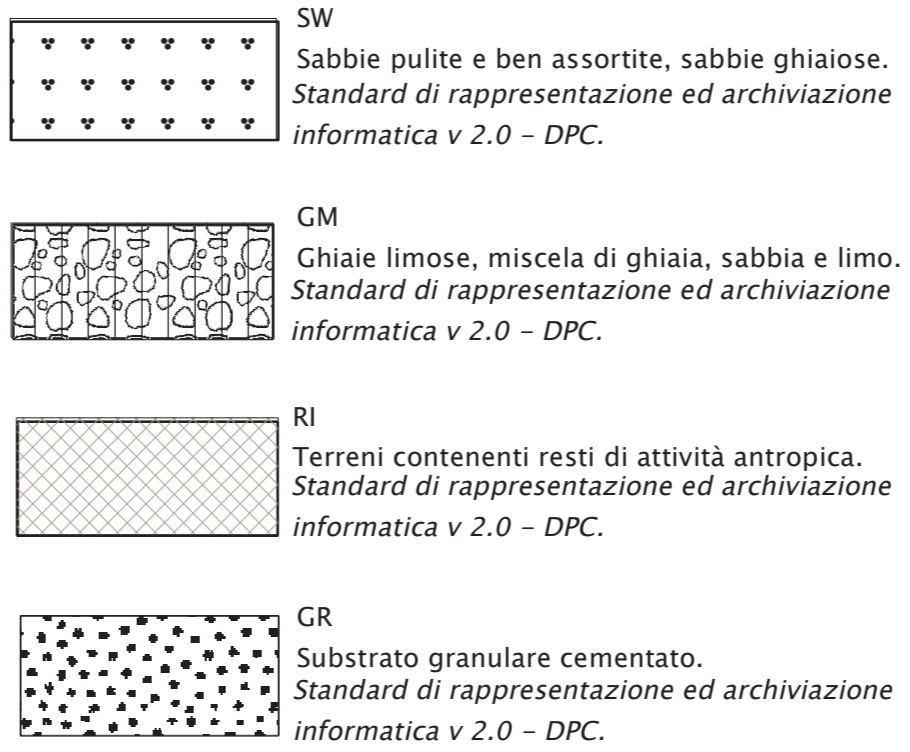
## APPORTI SPETTRALI ORIZZONTALE SU VERTICALE



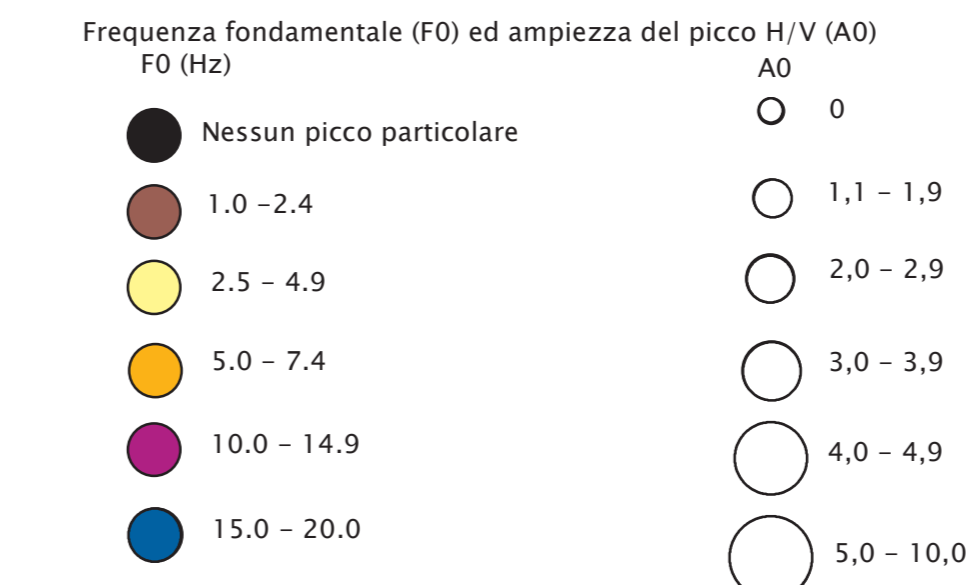
## ZONE STABILIZATION



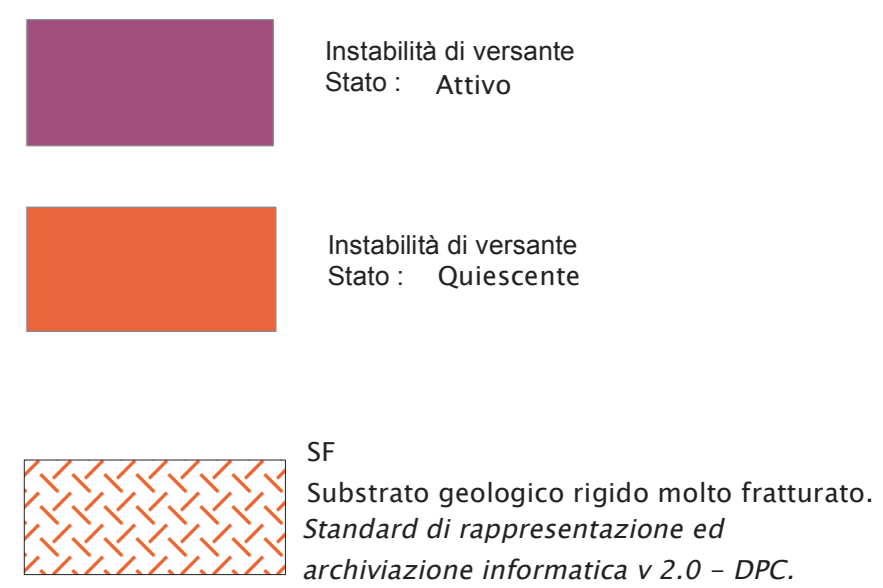
#### LEGENDA RETINI UTILIZZATI



## FREQUENZE FONDAMENTALI DI VIBRAZIONE



## ZONE INSTABILI



## ALTRI ELEMENTI

